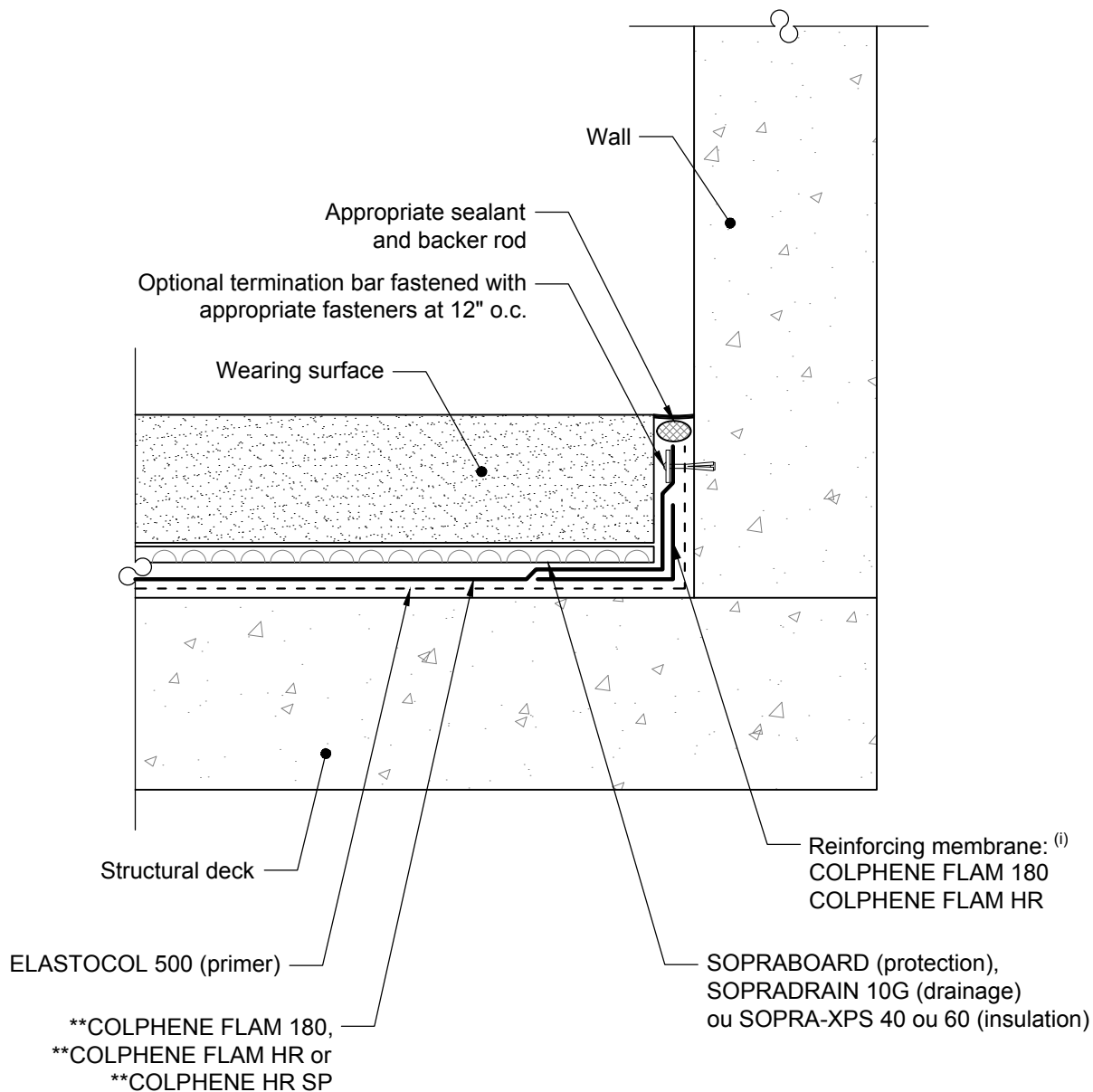


****THERMOFUSIBLE MEMBRANES**

COLPHENE FLAM 180, COLPHENE FLAM HR

and COLPHENE HR SP:

Seal all terminations (horizontal and vertical) with
trowel with a round end.



COPYRIGHT 2017 SOPREMA



1688, J-B Michaud
Drummondville, QC J2C 8E9
WWW.SOPREMA.CA

TITLE: PLAZA DECK / UPSTAND JUNCTION

| | | |
|---------------|--------------------|-------|
| PROJECT: | DRAWING NUMBER: | |
| SCALE: N.T.S. | DATE: OCTOBRE 2017 | BGW15 |

Note: This detail is only used where it is not possible or practical to terminate the waterproofing membrane above the finished wearing surface.
(i): Use the waterproofing membrane installed on the system as reinforcing membrane.